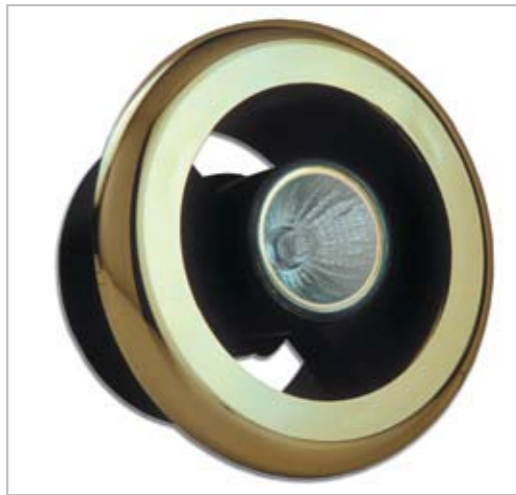


Showerlite Range

SL/SLK 100MM 120MM & 150MM



- The Manrose Showerlite is a distinctive Showerlite which is incorporated into a circular diffuser, suitable for showers and bathrooms. Now available in 100mm (4"), 120mm (5") and 150mm (6") versions.
- The Showerlite can be used within the splash area of the shower or bath and is powered by a S.E.L.V. remote safety isolating transformer.
- The Showerlite is suitable for any 100mm (4"), 120mm (5") and 150mm (6") in-line system such as the Manrose SF/ID range of in-line axial fans or the CFD/MAN range of in-line centrifugal fans.
- Available in three colours white, brass and chrome, the Manrose Showerlite will enhance any shower or bathroom providing a rich warm glow of soft light.
- The Showerlite is available separately in boxed carton packaging or in blister packs with or without transformer. They are also available in a blister fan kit pack. Each pack is supplied complete with fan (available with or without timer), Showerlite unit, transformer, one length of PVC flexible ducting, external wall grille, fixing screws, plugs and straps.
- A centrifugal in-line fan kit is now available for longer ducting runs.



Technical Details

Cat. No. Product type

Boxed Cartons

- SL-W** Showerlite white fitting
- SL-B** Showerlite brass fitting
- SL-C** Showerlite chrome fitting
- T1250W** Transformer

Showerlite Single Blister Packs

- SL-WB** Showerlite white fitting
- SL-WTB** Showerlite with transformer white fitting
- SL-BB** Showerlite brass fitting
- SL-BTB** Showerlite with transformer brass fitting
- SL-CB** Showerlite chrome fitting
- SL-CTB** Showerlite with transformer chrome fitting

Showerlite In-Line Axial Extractor Packs Blister Packaging

- SLKSW** Showerlite fan kit, standard model white fitting
- SLKSB** Showerlite fan kit, standard model brass fitting
- SLKSC** Showerlite fan kit, standard model chrome fitting
- SLKTW** Showerlite fan kit, timer model white fitting
- SLKTB** Showerlite fan kit, timer model brass fitting
- SLKTC** Showerlite fan kit, timer model chrome fitting
- SL-120SW** Showerlite fan kit, standard model white fitting
- SL-120SC** Showerlite fan kit, standard model chrome fitting
- SL-120SB** Showerlite fan kit, standard model brass fitting
- SL-120TW** Showerlite fan kit, timer model white fitting
- SL-120TC** Showerlite fan kit, timer model chrome fitting
- SL-120TB** Showerlite fan kit, timer model brass fitting
- SL-150SW** Showerlite fan kit, standard model white fitting
- SL-150SC** Showerlite fan kit, standard model chrome fitting
- SL-150SB** Showerlite fan kit, standard model brass fitting
- SL-150TW** Showerlite fan kit, timer model white fitting
- SL-150TC** Showerlite fan kit, timer model chrome fitting
- SL-150TB** Showerlite fan kit, timer model brass fitting

Centrifugal Packs Boxed Packaging

- SLCFDSW** Showerlite centrifugal fan kit, standard model white fitting
- SLCFDSB** Showerlite centrifugal fan kit, standard model brass fitting
- SLCFDSC** Showerlite centrifugal fan kit, standard model chrome fitting
- SLCFDTW** Showerlite centrifugal fan kit, timer model white fitting
- SLCFDTB** Showerlite centrifugal fan kit, timer model brass fitting
- SLCFDTC** Showerlite centrifugal fan kit, timer model chrome fitting

Dimensions (mm)

PRODUCT	A	B	C
SL-W/B/C	140Ø	74	98
SL120	170Ø	74	118
SL150	200Ø	74	148



Packaging

Boxed in outers of 10. For packaging dimensions, contact our technical department.

Installation

Designed to be ceiling mounted through 102mm (4") diameter flexible ducting or rigid pipes.

Electrical

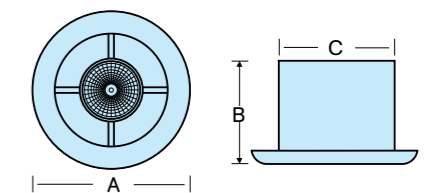
12 volt 35W dichroic 5.3 sealed lamp. Powered by a transformer T1250W. Input, AC. Output, 12 volt AC. 50 VA.

Construction

All plastic components are moulded in high temperature VO rated thermoplastics.



Dimensions



Typical Installation

