



# Lo-Watt™ Range

80% energy saving

LW100/SELV/LW100



- The NEW Lo-Watt fan is Designed for wall/ceiling mounting.
- Standard/timer/humidity versions available.
- Reduces power consumptions.
- Uses up to 80% less energy compared to a normal fan.
- Lower running costs.
- SELV Extra low voltage models also available.
- Quiet and efficient, the 100mm (4") series has an impressive extract rate of 75m<sup>3</sup>/hr, 21 litres per second.
- The units are all manufactured using high ABS thermoplastics for strength and durability, aesthetics and easy cleaning.
- Designed to comply with the 2006 Building Regulations on Ventilation (F1).

**Table 32: Minimum provisions for mechanical ventilation systems**

	Standards for new and replacement systems	Supplementary information
<b>1.0 Fan power</b>	a. Mechanical ventilation systems should be designed to minimise electric fan power. Specific fan power (SFP) should not be worse than: <ol style="list-style-type: none"> <li>0.5 W/l/s for intermittent extract ventilation systems;</li> <li>0.7 W/l/s for continuous extract ventilation systems;</li> <li>0.5 W/l/s for continuous supply ventilation systems;</li> <li>1.5 W/l/s for continuous supply and extract with heat recovery ventilation systems.</li> </ol>	

## Proposed New Building Regulations 2010 Domestic

The proposed Building Regulations to be introduced in 2010 - Domestic Dwellings, gives the recommended Watts Per Litre (w/l/s) for each type of fan, to be used in new buildings.

**Our new range of Lo-Watt fans are specifically designed to meet the proposed regulation**



## Technical Details

<b>Cat. No.</b>	<b>Product type</b>
<b>LW100S</b>	Lo Watt Standard Fan
<b>LW100T</b>	Lo Watt Timer Fan Incorporating a 1-20min over run
<b>LW100H</b>	Lo Watt Humidity Timer Fan Incorporating a 1-20min over run and adjustable humidistat 20-90% RH

Safety Extra Low Voltage (SELV) includes fan and transformer

<b>SELVLW100S</b>	Lo Watt Standard Fan
<b>SELVLW100T</b>	Lo Watt Timer Fan Incorporating a 1-20min over run
<b>SELVLW100H</b>	Lo Watt Humidity Timer Fan Incorporating a 1-20min over run and adjustable humidistat 20-90% RH

### Installation

LW100 Series designed for wall mounting only. Through 100mm (4") diameter flexible or rigid pipes.

### Electrical

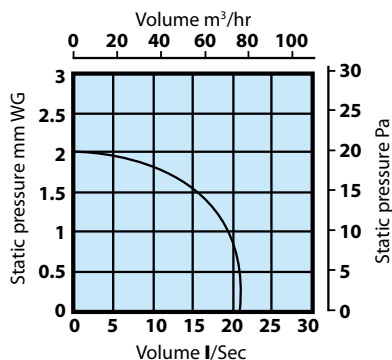
220-240 - AC. 50Hz Single phase Consuming 4.3watts. The LW100 is powered by a brushless motor. All wiring must comply with current IEE regulations. A double pole Isolating switch, having contact separation of at least 3mm in all poles, must be used with a 3amp fuse fitted. The fan must not be accessible to a person using either the shower or the bath (use SELV model) and mounted a minimum of 1.8metres from the floor.

### Additional Data

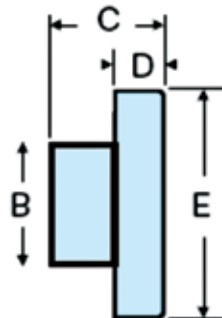
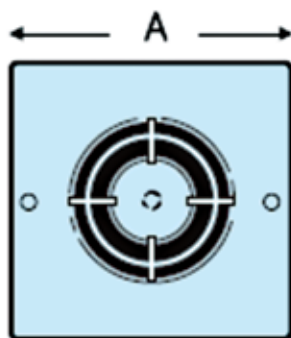
Maximum pressure: 20 p.a  
 Fan Speed: 3123 r.p.m  
 Sound volume: 38.0 dB(A)  
 Maximum operating temperature: 45°C

### Performance Graph

LW100 75m<sup>3</sup>/hr at 21 litres per

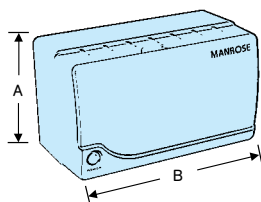


### Dimensions LW100



### Dimensions (mm)

Product	A	B	C	D	E
LW100	163	98	97	30	163
SELVLW	82	145	78		



### Dimensions Transformer SELVLW 100

Fitted on standard 25mm deep double pattress

