

# Flat Fan Range

FLAT100SFLAT150S



100mm and 150mm panel axial fans for bathrooms, cloakrooms and kitchens. Slim profile only 15mm. Suitable for wall or panel mounting using the appropriate fixing kit.

- Provides required performance of 54m<sup>3</sup>/h (15l/s)- bathrooms and 216m<sup>3</sup>/h (60l/s) - kitchens to comply with the Building Regulations (Document F).
- Panel or Wall mounting.
- Model options with pullcord and timer control.
- Integral backdraught shutters.



## Technical Details

**Cat. No.**    **Product type**  
 Bathroom & toilet Fans

**FLAT100S**    Single speed axial fan with integral backdraught shutters for remote or light switch operation

**FLAT100T**    Single speed axial fan with electronic over-run timer – up to 30 mins and integral backdraught shutters

**Kitchen & Utility room Fans**

**FLAT150S**    Single speed axial fan with integral backdraught shutters for remote or light switch operation

### Packaging

Flat Fan series packed in outers of 10. Contact our technical department for packaging dimensions

### Electrical

220-240V - AC. 50Hz . Single phase consuming 14 watts on the 100 series and 16 watts on the 150 series. These fans are double insulated and do not require an earth. All wiring must comply with current IEE regulations. A double pole isolating switch, having a contact separation of at least 3mm in all poles, must be used with a 3 amp fuse fitted. The fan must not be accessible to a person using either the shower or bath and mounted a minimum of 1.8 metres from the floor.

### Additional Data

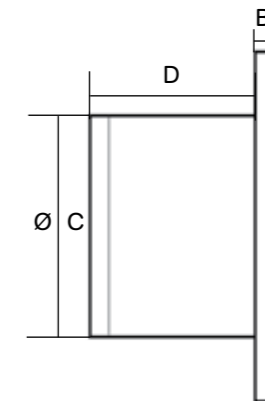
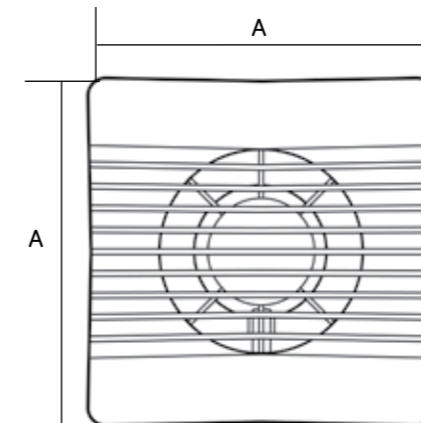
#### 100mm (4") Range

Maximum pressure: 20 p.a.  
 Sound volume: 38.0 dB(A)  
 Maximum operating temperature: 40°C

#### 150mm (6") Range

Maximum pressure: 50 p.a.  
 Sound volume: 45.0 dB(A)  
 Maximum operating temperature: 40°C

### Dimensions



### Dimensions (mm)

PRODUCT	A	B	C	D
<b>FLAT100S</b>	159	15	98	70
<b>FLAT100T</b>	159	15	98	70
<b>FLAT150S</b>	225	15	144	93
<b>FLAT150T</b>	225	15	144	93

### Performance Graph

**Flat100** - 95 m<sup>3</sup>/hr 26 lps  
**Flat150** - 258m<sup>3</sup>/hr 71lps

