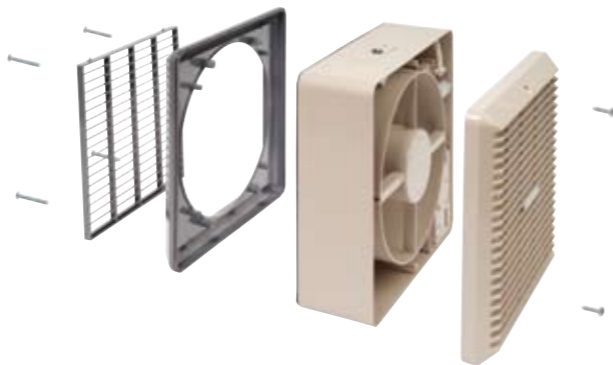


Commercial Window Fans

COMMERCIAL SERIES COMG150/230/300



- MANROSE Commercial Window Fans are available in three sizes, 150mm (6"), 230mm (9") and 300mm (12").
- The stylish internal louvre incorporates the internal shutters which are built into the grille so the internal profile of the fan is less obtrusive. These elegant and stylish units will blend into the background and cover a wide variety of commercial applications such as pubs, restaurants, hotels, offices, shops and factories.
- They are also suitable for use in public sector areas such as service stations, hospitals, schools and railway stations and are designed for heavy usage. Available in a soft neutral grey or traditional white, they will blend in with most decors and surroundings.
- Another feature of the range is that on the grey models the external grille is moulded in a dark grey so it will not be too obtrusive on the window line, and blend into the background. The grey commercial series does not require as much cleaning as their white counterparts.
- Available with automatic Shutters or pullcord operated shutters.
- Tested to comply with the 2006 Building Regulations on Ventilation (F1).



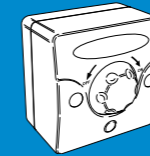
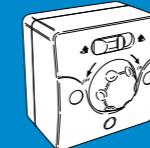
Technical Details

Cat. No.	Product type
COMG150MP	Internal shutters pullcord operated
COMG150A	Automatic model with internal thermo-activated shutters
COMG230MP	Internal shutters pullcord operated
COMG230A	Automatic model with internal thermo-activated shutters
COMG300MP	Internal shutters pullcord operated
COMG300A	Automatic model with internal thermo-activated shutters

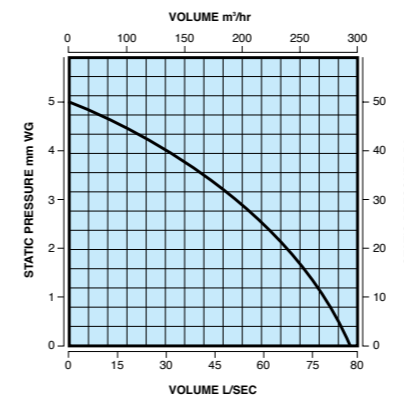
Accessories

Variable Speed Controller Intake-Extract with neon light for 230mm (9") and 300mm (12") fans
Cat. No. COMTSCVR

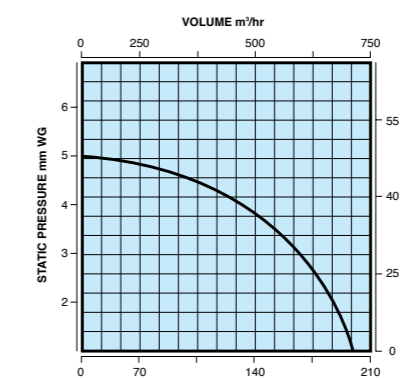
Variable Speed Controller Extract with neon light for 150mm (6") fans
Cat. No. COMTSCV



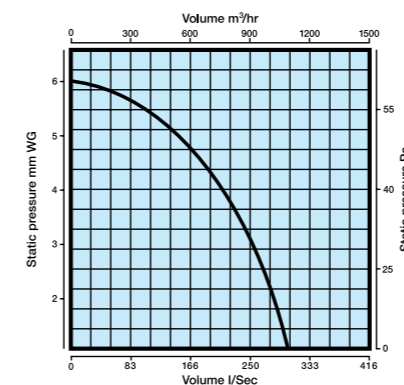
Performance Graph
150mm (6") series
278m³/hr, 77 litres per second



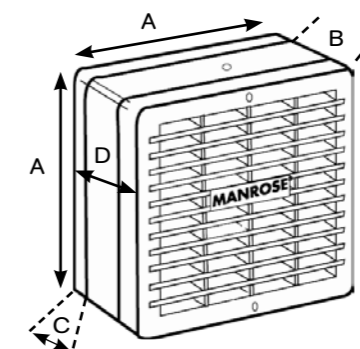
Performance Graph
230mm (9") series
668m³/hr, 185 litres per second



Performance Graph
300mm (12") series
1100m³/hr, 306 litres per second



Dimensions (mm)



Packaging

In outers of 1. Contact our Technical Department for packaging dimensions.

Installation

- COMG150MP** Window fitting through 184mm Ø hole
- COMG150A** Window fitting through 184mm Ø hole
- COMG230MP** Window fitting through 260mm Ø hole
- COMG230A** Window fitting through 260mm Ø hole
- COMG300MP** Window fitting through 320mm Ø hole
- COMG300A** Window fitting through 320mm Ø hole

Electrical

220-240V - AC. 50Hz □. Single phase consuming 20W on 150mm Series, 41W on the 230mm Series and 82W on the 300mm Series. These fans are double insulated and do not require an earth. All wiring must comply with the current IEE regulations. A double pole isolating switch, having a contact separation of at least 3mm in all poles, must be used with a 3 amp fuse fitted. The fan should NOT be accessible to a person using either the shower or bath and mounted a minimum of 1.8m from the floor.

Additional Data

- COMCW150**
Maximum pressure: 50 p.a.
Fan speed: 2400 r.p.m.
Sound volume: 40.0 dB(A)
Maximum operating temperature: 40°C
- COMCW230**
Maximum pressure: 50 p.a.
Fan speed: 1600 r.p.m.
Sound volume: 53.0 dB(A)
Maximum operating temperature: 40°C
- COMCW300**
Maximum pressure: 60 p.a.
Fan speed: 1300 r.p.m.
Sound volume: 60.0 dB(A)
Maximum operating temperature: 40°C

Dimensions (mm)

PRODUCT	A	B	C	D
COMCW150	205	150	66	103
COMCW230	286	230	75	141
COMCW300	362	300	81	156